



LONG-TERM FACILITIES PLANNING WORKSHOP

December 6, 2023

Success Criteria for Tonight's Workshop

1. Review the new middle school "bester" scope and concept budget.
2. Receive administration's RAHS scope prioritization and proposal for the Center for Innovation and Entrepreneurship.
3. Provide feedback and direction on the potential sale of land on the site considered for the new middle school.
4. Provide consensus direction on the scope for a potential project to be tested on the March, 2024 community survey.

Strategic Focus Areas

1. Rigorous Academic Programs and Career Pathways for All Students
2. Continuous Improvement of Student Growth and Achievement
3. Innovative Facilities with Modern Learning Environments
4. Personnel Excellence: Attracting, Developing, and Retaining High Quality Staff
5. Responsible Fiscal Management: Funding our Priorities and Demonstrating a Return on the Public's Investment in our Schools.
6. Branding the School District of Reedsburg: Communicating and Marketing that Brand.

SD of Reedsburg : Long-Term Facilities Planning

Significantly Under Capacity	(-151 & more)
Under Capacity	(-26 to -150)
Within Capacity	(+/- 25)
Over Capacity	(+26)

Option Do Nothing

Indicates Year Data Taken Directly From MD Roffers

Enrollment Projections Based on MD Roffers 03.21.2022 Study - Open Enrollment In

Grade Configuration & Current Capacity	2021-2022	2022-2023	2023-2024	2024-2025	2025-2026	2026-2027	2027-2028	2028-2029	2029-2030	2030-2031	2031-2032	2032-2033	2033-2034	2034-2035	2035-2036	
EC																
All 4K	144	155	166	166	166	166	167	168	169	170	170	170	170	170	170	
Half 4K	72	78	83	83	83	83	83.5	84	85	85	85	85	85	85	85	
Half of Half 4K	36	39	42	42	42	42	42	42	42	43	43	43	43	43	43	2+ sections 2036
K-2 Enrollment	505	515	526	531	535	541	547	553	560	565	568	571	574	577	580	
Per Grade K-2	168	172	175	177	178	180	182	184	187	188	189	190	191	192	193	9+ sections 2036
3-5 Enrollment	511	514	517	527	536	542	548	554	560	566	569	573	576	579	582	
Per Grade 3-5	170	171	172	176	179	181	183	185	187	189	190	191	192	193	194	8+ sections 2036
6-8 Enrollment	583	574	566	556	547	551	556	560	565	569	575	582	589	595	602	
Per Grade 6-8	194	191	189	185	182	184	185	187	188	190	192	194	196	198	201	8 classrooms 2036
9-12 Enrollment	896	910	924	919	914	900	885	870	855	841	844	847	851	854	857	
Per Grade 9-12	224	228	231	230	229	225	221	218	214	210	211	212	213	214	214	8+ classrooms 2036
(4K-2) Enrollment/Projection	541	554	568	573	577	583	589	595	602	608	611	614	617	620	623	Enrollment/Projection
553 Capacity (90%)	553	553	553	553	553	553	553	553	553	553	553	553	553	553	553	Capacity
																WE 207 (3+ section) PE 346 (6 section)
(3-5) Enrollment/Projection	511	514	517	527	536	542	548	554	560	566	569	573	576	579	582	Enrollment/Projection
559 Capacity (90%)	559	559	559	559	559	559	559	559	559	559	559	559	559	559	559	Capacity
																(9 section)
(6-8) Enrollment/Projection	583	574	566	556	547	551	556	560	565	569	575	582	589	595	602	Enrollment/Projection
589 Capacity (75%)	589	589	589	589	589	589	589	589	589	589	589	589	589	589	589	Capacity
(9-12) Enrollment/Projection	896	910	924	919	914	900	885	870	855	841	844	847	851	854	857	Enrollment/Projection
1112 Capacity (80%)	1112	1112	1112	1112	1112	1112	1112	1112	1112	1112	1112	1112	1112	1112	1112	Capacity



Can we convert Prairie Ridge to Geothermal?

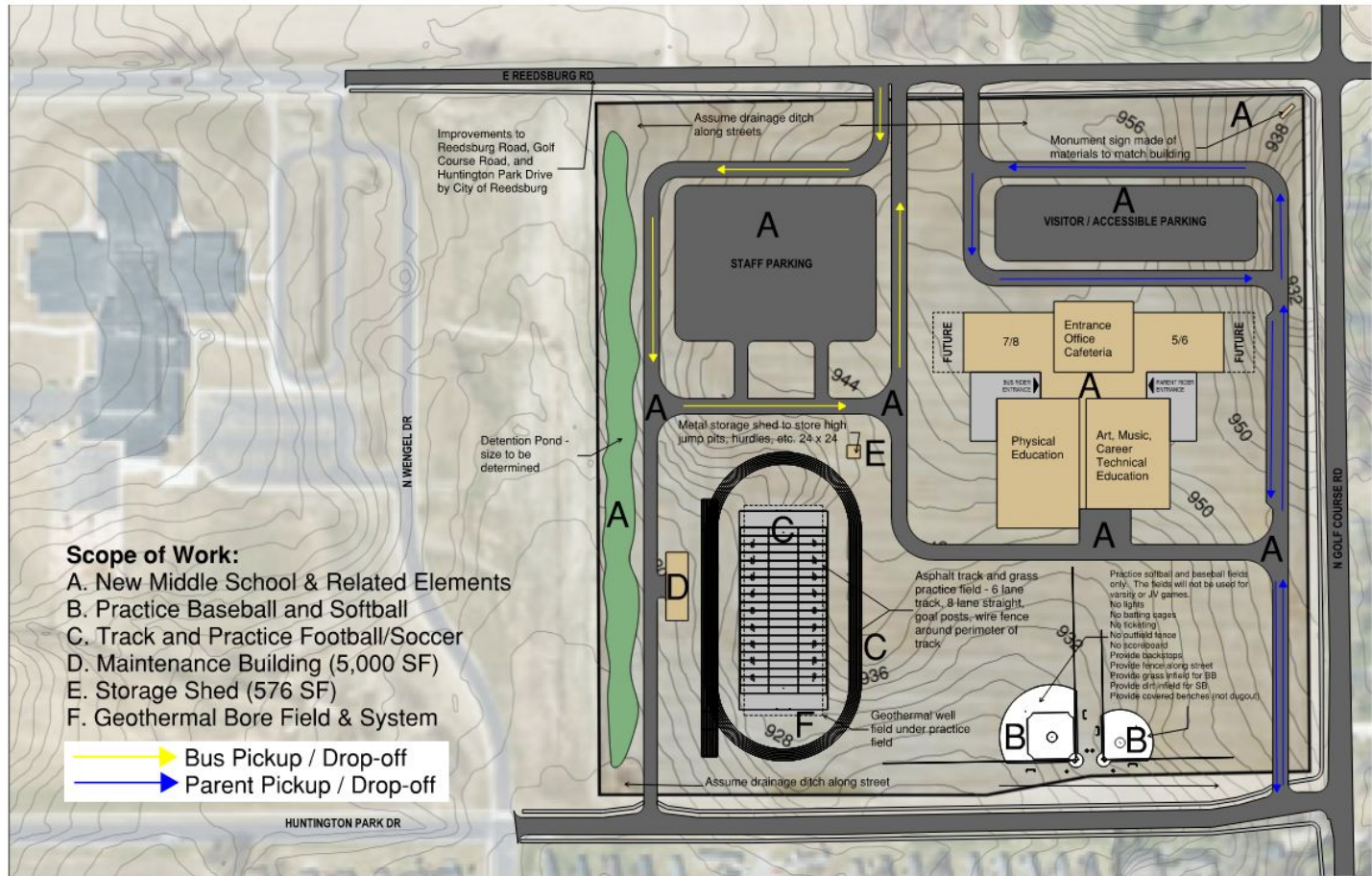
- ❖ In short, yes, but not in any cost-effective way.
- ❖ According to North American Mechanical, Inc. (NAMI), this would require us to replace the entire HVAC system at PRI.
- ❖ Given the cost of HVAC replacement, and the cost of the geothermal system, the predicted payback would be close to 25 years.



(5-8) Middle School Site Proposal/Development

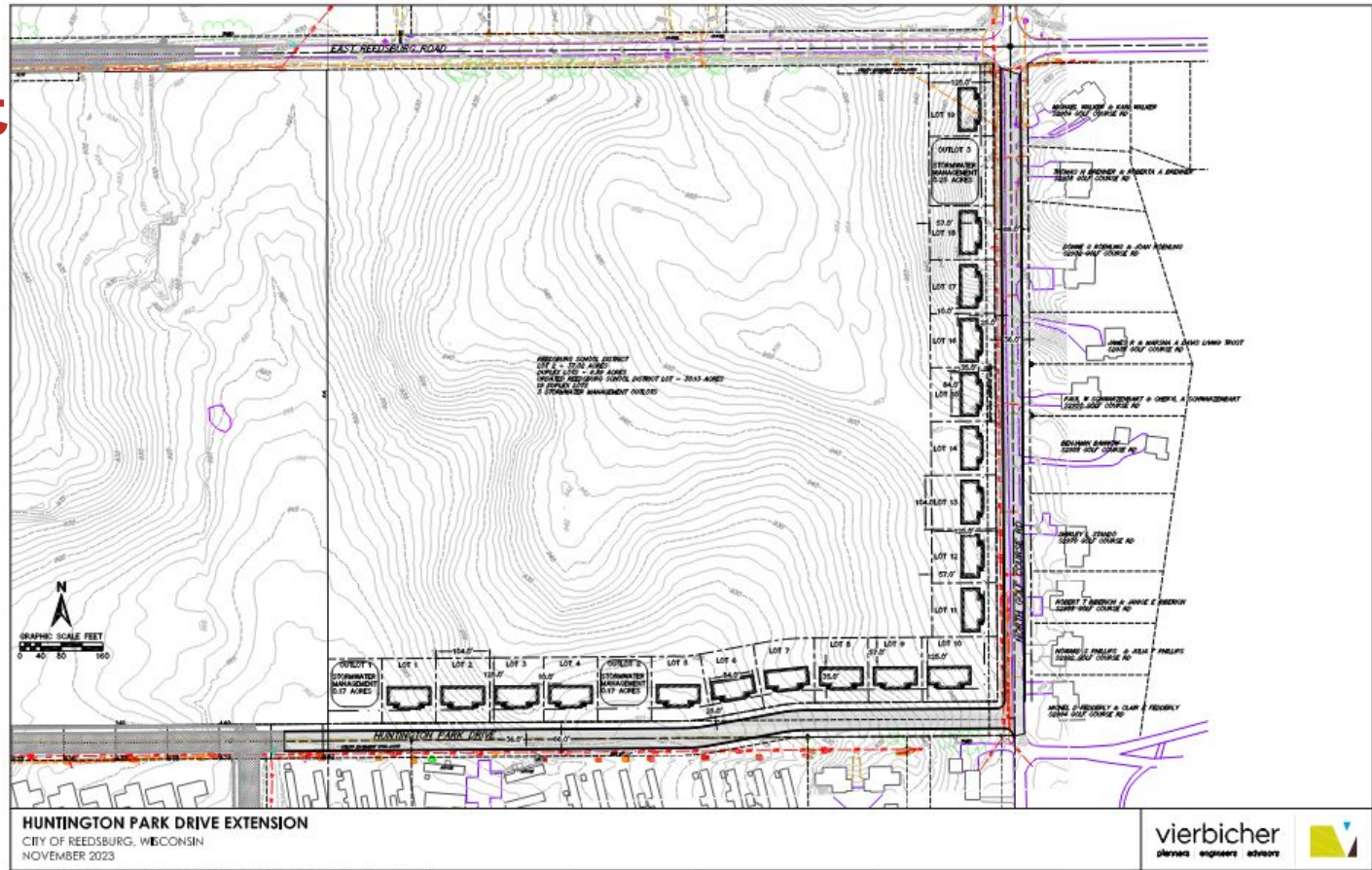


Previous MS Site Concept



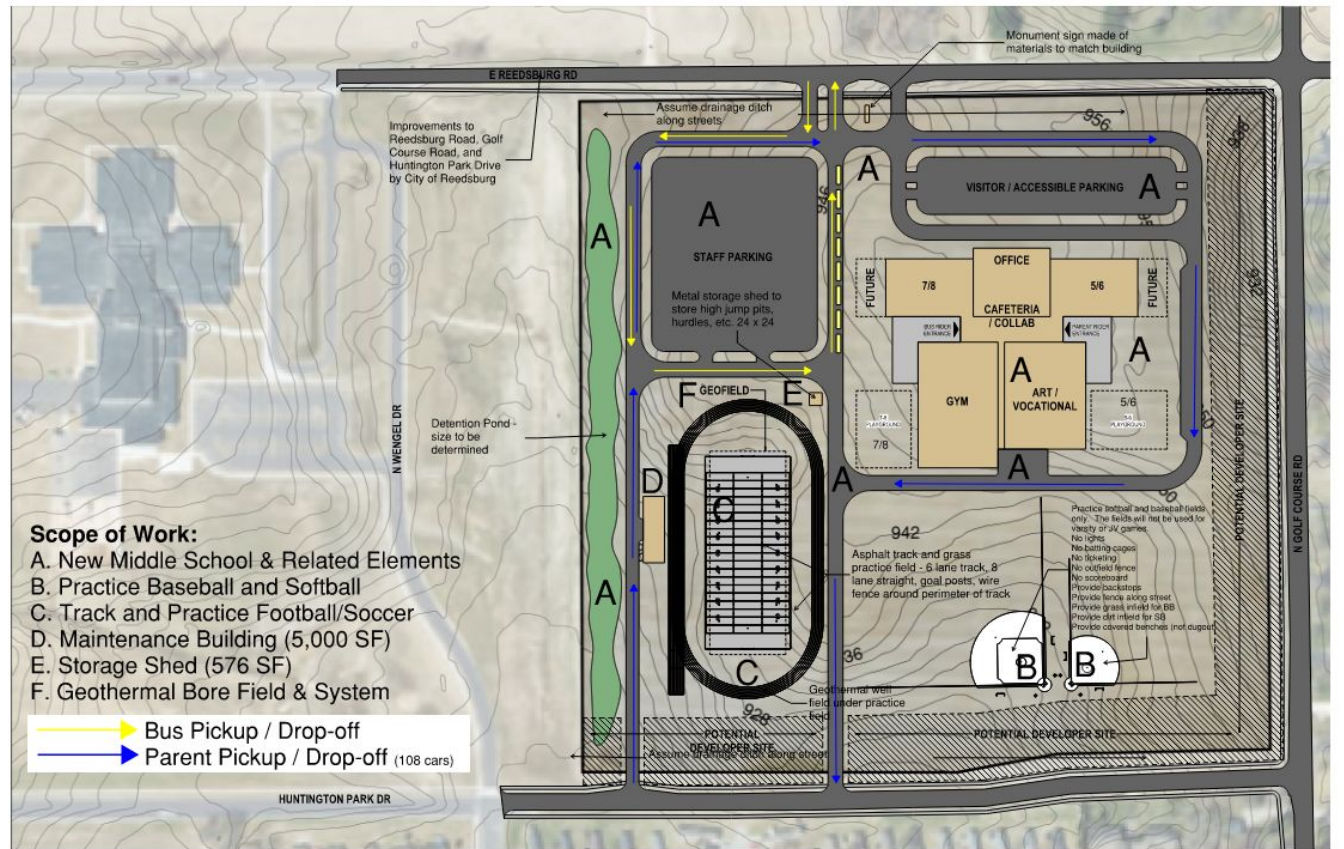
Developer Site Concept

- Access to Huntington Park or Golf Course Road is important for MS traffic.
- Controlling storm water drainage from/to site will be important.
- Controlling lights from MS site will be important.



Proposed MS Site Concept

- Access to Huntington Park or Golf Course Road is important for MS traffic.
- Controlling storm water drainage from/to site will be important.
- Controlling lights from MS site will be important.



(5-8) Middle School Space Program Analysis



Gym Station and CTE Analysis

PERIOD	PHYSICAL EDUCATION DAY 1			PERIOD	PHYSICAL EDUCATION DAY 2		
	GYM 1	GYM 2	GYM 3		GYM 1	GYM 2	GYM 3
1	5	5	5	1	6	6	6
2	5	5	--	2	6	6	--
3	5	5	--	3	6	6	--
4	F	8	8	4	F	8	8
5	7	7	--	5	7	7	--
6	7	F	8	6	7	F	8
7	7	F	8	7	7	F	8
8	--	--	--	8	--	--	--

2 STALL GYM USAGE	
WITH A FITNESS ROOM	W/O FITNESS ROOM
150%	150%
100%	100%
100%	100%
100%	150%
100%	100%
100%	150%
100%	150%

3 STALL GYM USAGE	
WITH A FITNESS ROOM	W/O FITNESS ROOM
100%	100%
67%	67%
67%	67%
67%	100%
67%	67%
67%	100%
67%	100%

PE	1	2	3	4	5	6	7	8
Teacher 1	PE 5/6	--	PE 8	PE 8	PE 7	PE 7	PE 7	--
Teacher 2	PE 5/6	--	PE 8	PE 8	PE 7	PE 8	PE 8	--
Teacher 3	--	PE 5/6	PE 5/6	HEALTH 7	HEALTH 7	HEALTH 7	HEALTH 7	--
Teacher 4	PE 5/6	PE 5/6	PE 5/6	FIT 8	--	FIT 8	FIT 8	--



SECTIONS	CTE NEEDS			
	GRADE 5	GRADE 6	GRADE 7	GRADE 8
	3	3	2	4
	SEM	SEM	QTR	SEM



PREVIOUS Space Program Matrix

	# Classrooms per Grade	Classroom Size (Square Feet)	Small Group Instruction Spaces per Grade	Large Collaboration Space Opportunities	Career Tech Opportunities	Size of Gym (# Courts)	Wrestling & Multi-purpose Square Footage	Building Capacity	Year MS becomes "Within Capacity"	Total Square Footage	Cost
Best Option	8	900	4	Grade Wings, Social Stair, and Stage	Separate spaces for 5/6 & 7/8	3	3,800	865	Beyond 2036	218,422	\$\$\$\$
Better Option	7	900	3	Grade Wings Only	Shared spaces for 5-8	3	3,200	812	2034	208,027	\$\$\$
Minimum Option	7	850	3	Small Collaboration Spaces per Grade Wing	Shared spaces for 5-8	2	3,200	777	2030	192,907	\$\$



School District of Reedsburg

Preliminary Space Program for a 5-8 middle school - NEW BUILDING - "Bestest" Option

26-Oct-23

		NEW CONSTRUCTION					Comparison to Existing (Instructional Space)				
		Occupants	# rooms	SF/room	Total SF	Staff	# rooms	SF/room	Total SF	Difference	Function / Additional Information
Core Instructional Wings											
5-6 Upper Elementary Format											
	Fifth Grade	25	8	850	6,800	8				(6,800)	
	Sixth Grade	25	8	850	6,800	8	7	780	5,460	(1,340)	
	Science Lab - Shared		1	1,400	1,400		1	1	1,400	-	
	Science Prep - Shared		1	300	300				-	(300)	
	Intervention Room - Shared		1	400	400	1					5-8 students with instructor
	ELL - Shared		1	450	450	1					5-10 students
	EBD Classroom		1	1,000	1,000	1					15 students
	General SE Classroom		1	700	700	1					
	Maker Space		1	1,200	1,200						stacked - open to collaboration space
	Tech/Robotics Classroom		0	700	-						stacked - open to collaboration space
	AP/Dean Office		1	150	150	1					
	Conference Room		1	300	300						10 people
	Staff Storage		2	300	600				-	(600)	Long term storage room for staff - 1 per grade
	Teacher Workroom		2	500	1,000				-	(1,000)	Professional collaboration space (teachers, cross cat, interventionists)- 1 per grade
	Large Collaboration Space		2	1,700	3,400				-	(3,400)	Large break-out, connects all classrooms - 1 per grade
	SGI		8	100	800				-	(800)	Small Group instruction - 4 per grade
	Student Lockers		4	1,000	4,000				-	(4,000)	Locker area w/15x15 lockers
	Restrooms		12	64	768				-	(768)	(6) single use restrooms per grade



School District of Reedsburg

Preliminary Space Program for a 5-8 middle school - NEW BUILDING - "Beste" Option

26-Oct-23

		NEW CONSTRUCTION					Comparison to Existing (Instructional Space)					
		Occupants	# rooms	SF/room	Total SF	Staff	# rooms	SF/room	Total SF	Difference	Function / Additional Information	
7-8 Middle - House Format												
	Seventh Grade	25	8	850	6,800	8	7	780	5,460	(1,340)	(2) section format : Science, Math, LA/Reading, Social Studies... some rooms shared - Assume 225 per grade	
	Seventh Grade - Science Lab	25	1	1,400	1,400	1	1	1400	1,400	-	Part of (2) house format with (1) true science lab shared	
	Seventh Grade - Science Prep		1	300	300				-	(300)	Shared prep room for Science	
	Eighth Grade	25	8	850	6,800	8	7	780	5,460	(1,340)	(2) section format : Science, Math, LA/Reading, Social Studies...some rooms shared - Assume 225 per grade	
	Eighth Grade - Science Lab	25	1	1,400	1,400	1	1	1	1,400	-	Part of (2) house format with (1) true science lab shared	
	Eighth Grade - Science Prep		1	300	300				-	(300)	Shared prep room for Science	
	Intervention Room - Shared		1	400	400	1						
	ELL - Shared		1	450	450	1						
	EBD Classroom		1	1,000	1,000	1						
	General SE Classroom		1	700	700	1						
	Foreign Language		1	900	900	1						
	AP/Dean Office		1	150	150	1						
	Conference Room		1	300	300						10 people	
	Staff Storage - House		2	300	600				-	(600)	Long term storage room for staff - 1 per grade	
	Teacher Workroom		2	500	1,000				-	(1,000)	Professional collaboration space (teachers, cross cat, interventionists)- 1 per grade	
	Large Collaboration Space		2	1,700	3,400				-	(3,400)	Large break-out, connects all classrooms - 1 per grade	
	SGI		8	100	800				-	(800)	Small Group instruction - 4 per grade	
	Student Lockers		4	1,000	4,000				-	(4,000)	Locker area w/15x15 lockers	
	Restrooms		12	64	768				-	(768)	(6) single use restrooms per grade	
	Sub Total	850			61,536	24						
										-		



School District of Reedsburg

Preliminary Space Program for a 5-8 middle school - NEW BUILDING - "Beste" Option

26-Oct-23

		NEW CONSTRUCTION					Comparison to Existing (Instructional Space)				
Exploratory Areas		Occupants	# rooms	SF/room	Total SF	Staff	# rooms	SF/room	Total SF	Difference	Function / Additional Information
Art - Shared											
	Classroom	25	2	1,250	2,500	2	1	3265	3265	765	Multipurpose design focused lab environment for hands-on, project-based exploration 2D & 3D. 50 SF per student
	Kiln room		1	100	100						Attached to 3D Art with dedicated vent to exterior
	Storage		1	500	500						Shared storage between rooms
	Sub Total	50			3,100	2					
Music - Shared											
	Band/orchestra	60	1	3,000	3,000	1	1	2495	2495	(505)	Large ensemble space. Higher ceilings and acoustically controlled environment. 50 SF per student
	Choir	75	1	2,600	2,600	1	1	1000	1000	(1,600)	Large ensemble space. Higher ceilings and acoustically controlled environment. 35 SF per student.
	General Music	50	1	1,800	1,800	1					Medium ensemble space. Higher ceilings and acoustically controlled environment. 35 SF per student
	Instrument storage		1	600	600						Located adjacent to Band Room
	Practice Room		4	80	320						Individual & small group practice & rehearsal
	Storage		2	200	400						Long term storage closet for staff
	Office		1	500	500						Staff office, collaboration and work area, includes desks, music storage, instrument repair counter & sink
	Sub Total	185			9,220	3					
Career Tech 7-8											
	Robotics / Engineering Lab		1	1,500	1,500						Multipurpose design focused lab environment for hands-on, project-based exploration & coding. Clean and dirty areas
	Woods / Manufacturing Lab	25	1	2,500	2,500	1	1	3950	3950	1,450	Multipurpose design focused lab environment for hands-on, project-based exploration. Dirty area
	Lab storage		2	200	400						
	Ag Classroom	25	1	1,200	1,200	1	1	1000	1000	(200)	Shared classroom for Career Tech
	FaCE Lab	25	1	2,400	2,400	1	1	1587	1587	(813)	Intro to culinary arts - SS tables and residential appliances; shared space with portable sewing machines and layout tables
	FaCE Storage		1	200	200		1	100	100	(100)	
	Hydro / Aqua Lab		1	800	800						Hydroponics and Aquaponics - controlled environment
	Sub Total	75			9,000	3					12,150.00



School District of Reedsburg

Preliminary Space Program for a 5-8 middle school - NEW BUILDING - "Beste" Option

26-Oct-23

		NEW CONSTRUCTION					Comparison to Existing (Instructional Space)				
		Occupants	# rooms	SF/room	Total SF	Staff	# rooms	SF/room	Total SF	Difference	Function / Additional Information
Physical Education - Shared											
	Gym	75	1	21,000	21,000	3	1	11090	11090	(9,910)	3-station gym, bleachers, competition, tournament bleachers. Bleachers for 900.
	Fitness		1	3,200	3,200		1	2992	2992	(208)	also used as teaching station
	Wrestling/Multipurpose		1	3,800	3,800						Shared use during non-wrestling season
	Storage		2	500	1,000						1 to have exterior access
	Locker Rooms		2	1,000	2,000		2	1000	2000	-	a few individual showers, bathroom, lockers, benches - reduced size to match existing
	Office		1	300	300						room for (4) desks
	Sub Total	75			31,300	3					
Support Spaces											
Media Center - Shared											
	Large Group Space		1	3,500	3,500		1	2898	2898	(602)	multi-media, makerspace...flexible spaces with access to books as desired. Area with tables and storage cabinets.
	Conference / SGI		4	100	400						square footage allows for a combination of large and small rooms
	Office/workroom		1	400	400	2					
	Book Room		1	500	500						
	Sub Total				4,800	2					
Cafeteria - Shared											
	Commons		2	4,000	8,000		1	3626	3626	(4,374)	(2) seating areas for (2) grades eating at the same time. 200 students in each area @ 20sf/student
	Social Stair		0	2,000	-						located in the commons as part of the seating
	Stage / Platform		1	1,000	1,000		1	1454	1454	454	part of commons and could be used for student seating
	Serving Line		2	1,600	3,200						scatter format
	Kitchen		1	2,000	2,000	5	1	1489	1489	(511)	
	Dishwash		1	300	300						pass-through tray drop
	Kitchen storage		4	275	1,100						
	Kitchen Office		1	150	150	1					area for (1) desk
	Kitchen Staff Toilets		2	64	128						includes small bank of 2-tier lockers
	Sub Total				15,878	6					



School District of Reedsburg

Preliminary Space Program for a 5-8 middle school - NEW BUILDING - "Bester" Option

26-Oct-23

		NEW CONSTRUCTION					Comparison to Existing (Instructional Space)				
		Occupants	# rooms	SF/room	Total SF	Staff	# rooms	SF/room	Total SF	Difference	Function / Additional Information
Administration Office											
	Waiting		1	400	400						Combined Reception/ Waiting Area for 8 people
	Reception area		1	400	400	2					
	Admin/Guid Workroom		1	400	400						Printer, base and upper cabinets, layout table
	Storage		1	200	200						
	Principal		1	180	180	1					
	Admin Conference		1	250	250						
	Study Spaces		4	50	200						
	Instructional Coaches		1	200	200	2					desk and meeting chairs
	Nurse		1	200	200	1					desk, (2) cots, sink, locked storage
	Health Toilet		1	75	75						
	Staff Lounge		1	800	800						kitchenette, (2) refrig, (2) micro, sink, d/w, vending, counter space for potluck. Could be separate from admin office area. Space for 25.
	Staff Toilets		4	75	300						(2) on each floor of the building
	Mother's Room		2	75	150						Comfortable chair, under counter refrigerator, sink, casework storage. (1) per floor
Sub Total					3,755	6					
Special Needs											
	IDS		1	1,000	1,000	1					
	Sensory		1	500	500	1					
	OT/PT activity		1	500	500	1					
	OT/PT storage		1	200	200						
	Speech / Language		1	325	325	1					
	Toilet/ Shower		1	200	200						large bathroom with roll in shower, lift, changing table...group with IDS
Sub Total					2,725	4					
Student Services											
	Psychologist/Social Worker		1	250	250	1					separate office entrance
	Conference Room		1	260	260						shared space for (2) staff but only used by (1) at a time
	Counselor Office		3	180	540	2					8 people - IEP/SS/IT
	SRO		1	180	180	1					added (1) room
Sub Total					1,230	4					location to be determined - direct access to hallway



School District of Reedsburg

Preliminary Space Program for a 5-8 middle school - NEW BUILDING - "Bestor" Option

26-Oct-23

		NEW CONSTRUCTION					Comparison to Existing (Instructional Space)					
		Occupants	# rooms	SF/room	Total SF	Staff	# rooms	SF/room	Total SF	Difference	Function / Additional Information	
Miscellaneous												
	Commons Toilet rooms		2	1,500	3,000						4-5 fixture + single use, located for public access off main areas	
	Gym Toilet Rooms		2	1,000	2,000						3 fixture + single use	
	Maintenance office		1	200	200	2						
	Maintenance workroom		1	800	800							
	Receiving		1	1,300	1,300							
	Storage		4	225	900						general storage areas	
	Janitor closets		8	75	600							
	Data Headend Service		1	150	150							
	Data closets		8	75	600							
	Mechanical / boiler room		3	1,500	4,500						total combined SF Mech and Pumps	
	Water service / sprinkler		1	200	200							
	Electrical service		1	200	200							
	Electrical closet		8	75	600							
	Elevator stops		4	100	400						(2) 2-stop elevators	
Sub Total					15,450	2						
Totals												
Area		Total			New							
Total Net Area		157,994			157,994							
Circulation Factor 35%		55,298			55,298						walls, corridors, vestibules, stairs, circulation around furniture, mechanical shafts, etc.	
Total Gross Square Feet		213,292			213,292			106,495	(106,797)			
Capacity												
5-8 Capacity @70% utilization		865						589			Capacities are not directly comparable due to differnet grades served	
Square foot per student		247						181				



SD of Reedsburg : Long-Term Facilities Planning

updated

2023 0919

Significantly Over Capacity

Under Capacity

Within Capacity

Over Capacity

(-151 & more)

(-26 to -150)

(+/- 25)

(+26)

Replace Webb with New 5-8 Middle School **Bester Option**

Indicates Year Data Taken Directly From MD Roffers

Enrollment Projections Based on MD Roffers 03.21.2022 Study - Open Enrollment In															
Grade Configuration & Current Capacity	2021-2022	2022-2023	2023-2024	2024-2025	2025-2026	2026-2027	2027-2028	2028-2029	2029-2030	2030-2031	2031-2032	2032-2033	2033-2034	2034-2035	2035-2036
EC															
All 4K	144	155	166	166	166	166	167	168	169	170	170	170	170	170	170
Half 4K	72	78	83	83	83	83	83.5	84	85	85	85	85	85	85	85
Half of Half 4K	36	39	42	42	42	42	42	42	42	43	43	43	43	43	43
K-2 Enrollment	505	515	526	531	535	541	547	553	560	565	568	571	574	577	580
Per Grade K-2	168	172	175	177	178	180	182	184	187	188	189	190	191	192	193
3-5 Enrollment	511	514	517	527	536	542	548	554	560	566	569	573	576	579	582
Per Grade 3-5	170	171	172	176	179	181	183	185	187	189	190	191	192	193	194
6-8 Enrollment	583	574	566	556	547	551	556	560	565	569	575	582	589	595	602
Per Grade 6-8	194	191	189	185	182	184	185	187	188	190	192	194	196	198	201
9-12 Enrollment	896	910	924	919	914	900	885	870	855	841	844	847	851	854	857
Per Grade 9-12	224	228	231	230	229	225	221	218	214	210	211	212	213	214	214
(4K-2) Enrollment/Projection	541	554	568	573	577	583	406	411	416	419	421	423	425	427	429
553 Capacity (90%)	553	553	553	553	553	553	466	466	466	466	466	466	466	466	466
(3-5) Enrollment/Projection	511	514	517	527	536	542	548	554	560	566	569	573	576	579	582
559 Capacity (90%)	559	559	559	559	559	559	559	559	559	559	559	559	559	559	559
(6-8) Enrollment/Projection	583	574	566	556	547	551	739	745	752	758	765	773	781	788	796
589 Capacity (75%)	589	589	589	589	589	589	865	865	865	865	865	865	865	865	865
(9-12) Enrollment/Projection	896	910	924	919	914	900	885	870	855	841	844	847	851	854	857
1112 Capacity (80%)	1112	1112	1112	1112	1112	1112	1112	1112	1112	1112	1112	1112	1112	1112	1112
Nov 2024 Referendum: New 5-8 MS on District Owned Property for 865 Students															
Occupy new 5-8 MS															
Possible Nov 2034 Referendum: Addition to Prairie Ridge															

WS 209 (3+ section)
PV 257 (8 section)

PR (9 section)

865

Predicting an addition needed at Prairie Ridge



UPDATED Space Program Matrix

	# Classrooms per Grade	Classroom Size (Square Feet)	Small Group Instruction Spaces per Grade	Large Collaboration Space Opportunities	Career Tech Opportunities	Size of Gym (# Courts)	Wrestling & Multi-purpose Square Footage	Building Capacity	Year MS becomes "Within Capacity"	Total Square Footage	Cost for MS Only
Best Option	8	900	4	Grade Wings, Social Stair, and Stage	Separate spaces for 5/6 & 7/8	3	3,800	865	Beyond 2036	218,422	\$111.20M
"Bester" Option	8	850	4	Grade Wings and Stage	Fewer separate spaces for 5/6 & 7/8	3	3,800	865	Beyond 2036	213,292	\$108.62M
Better Option	7	900	3	Grade Wings Only	Shared spaces for 5-8	3	3,200	812	2034	208,027	\$105.90M
Minimum Option	7	850	3	Small Collaboration Spaces per Grade Wing	Shared spaces for 5-8	2	3,200	777	2030	192,907	\$97.90M



UPDATED Cost Estimate

REEDSBURG, WISCONSIN

Concept Budgets

Project Development Team

School District of Reedsburg
EUA
Kraemer Brothers

Based on concept sketches & program square footages provided by EUA on 8/29/2023 & 10/26/2023.

NEW MIDDLE SCHOOL - Grades 5 - 8 (Bester 213,292SF)	Intensity	Area	Unit	Cost / SF	Budget
Site Development - Utilities, Earthwork, Asphalt, Site Concrete, etc.	New	213,292	SF	\$ 25	\$ 5,330,000
Site Development - Practice Baseball, Softball, Football Fields & Asphalt Track	New	1	LS	\$ 1,500,000	\$ 1,500,000
Site Development - Maintenance Building(s)	New	5,000	SF	\$ 175	\$ 880,000
General Construction, M.E.P.FP. & Misc. Items - Inc.	New	213,292	SF	\$ 350	\$ 74,650,000
Geothermal Systems Upgrade vs. Conventional HVAC Systems	New	213,292	SF	\$ 9	\$ 1,920,000
Furniture	New	865	Student	\$ 2,500	\$ 2,130,000
District Soft Costs (Design/Engineering, Ins, FF&E etc.) = 8%					\$ 6,910,000
Contingency = (10%)					\$ 9,330,000
Inflation (5% per year for 2 years) = 10%					\$ 10,270,000
Demolition of Existing Webb Middle School (2027)					\$ 1,000,000
TOTAL - NEW MIDDLE SCHOOL - GRADES 5 - 8 (BESTER 213,292SF)					\$ 113,920,000



UPDATED Site Plan

\$1M - Demolition Webb MS

\$0.88M

**\$108.62
"Bester"
Middle
School**

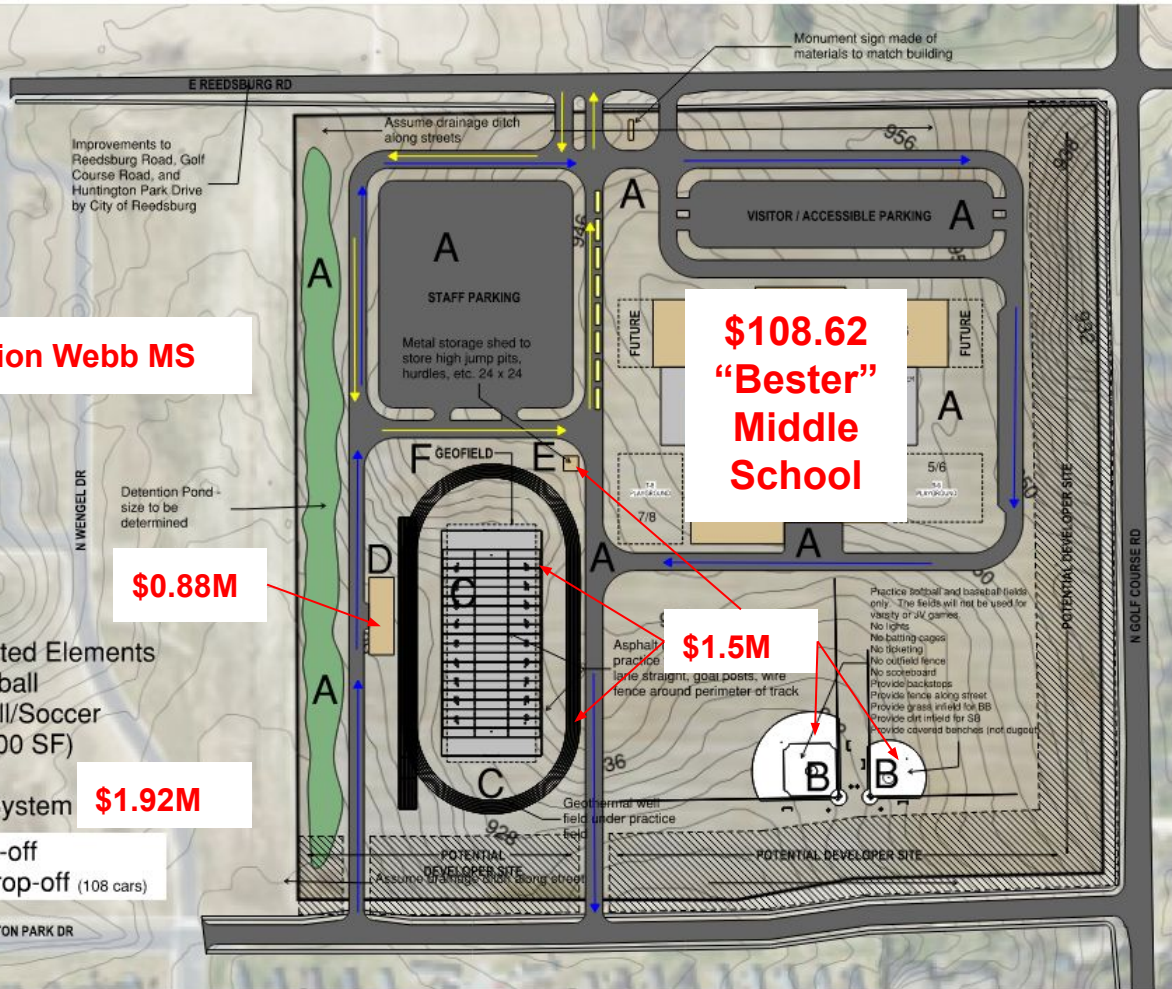
\$1.5M

\$1.92M

Scope of Work:

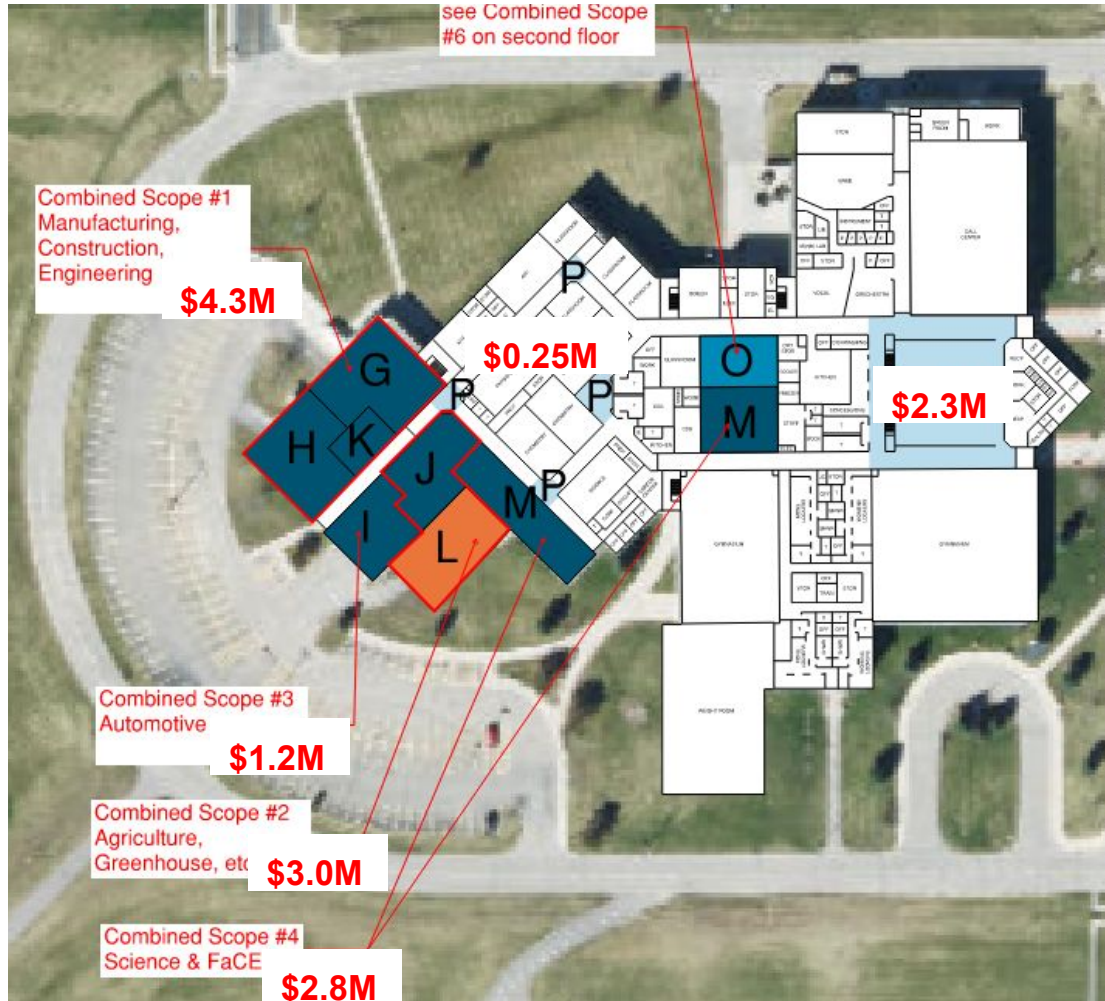
- A. New Middle School & Related Elements
- B. Practice Baseball and Softball
- C. Track and Practice Football/Soccer
- D. Maintenance Building (5,000 SF)
- E. Storage Shed (576 SF)
- F. Geothermal Bore Field & System

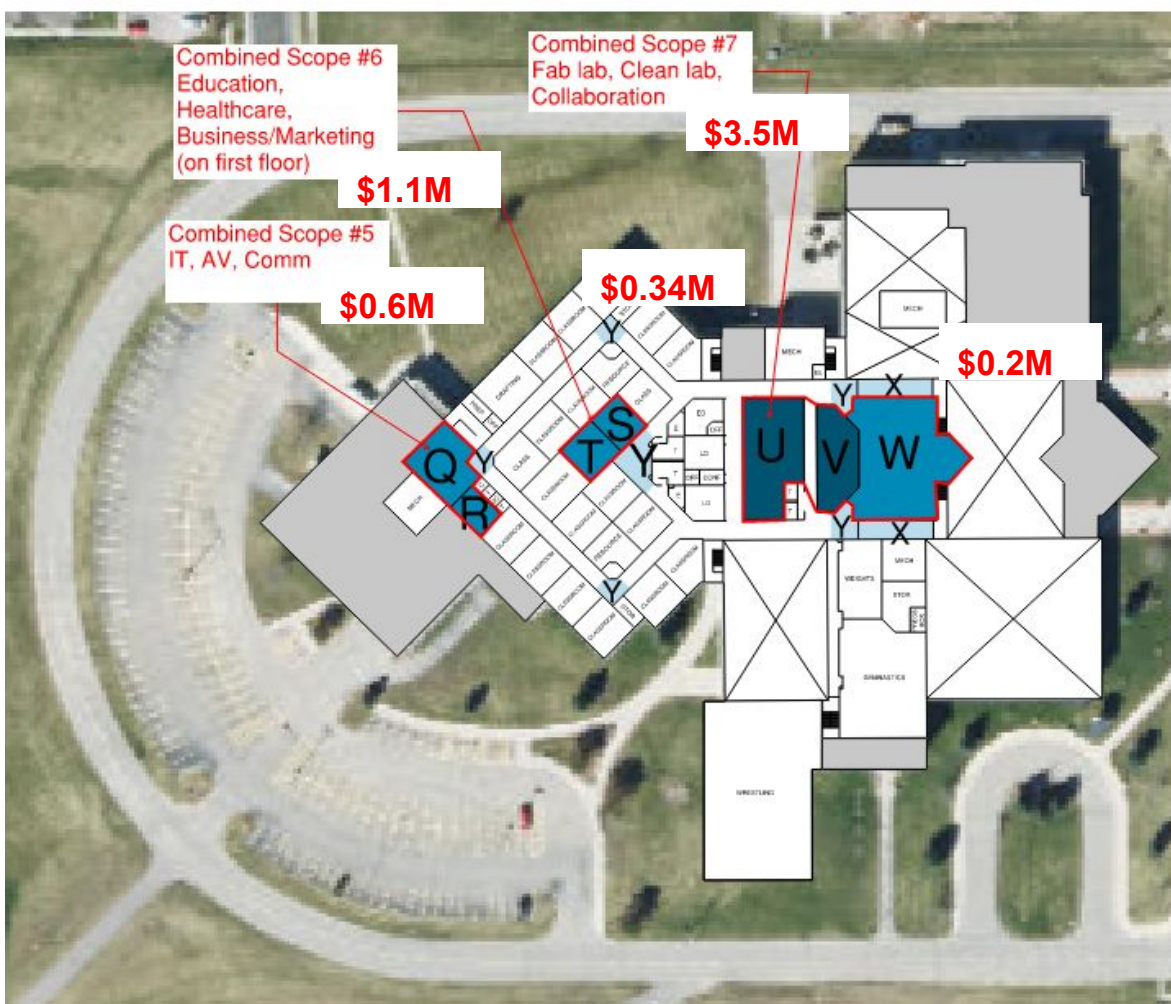
-  Bus Pickup / Drop-off
-  Parent Pickup / Drop-off (108 cars)



High School Renovation Concept Budget Review & Prioritization







HS Scope Prioritization

1. HS Library/Innovation Center
2. Agriculture
3. Manufacturing/Engineering/Construction
4. Education/Healthcare/Business
5. Intersections - First and Second Floor
6. Commons/Cafeteria
7. IT/AV/Communications
8. Automotive
9. Science/FaCE



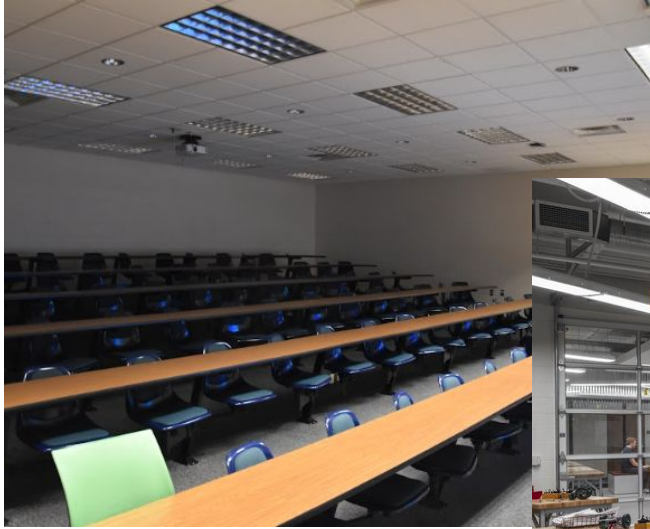
HS Scope Examples - Library / Innovation Center



Existing



HS Scope Examples - Library / Innovation Center



Existing



HS Scope Examples - Library / Innovation Center



HS Scope Examples - Agriculture



Existing



HS Scope Examples - Agriculture



Existing



HS Scope Examples - Agriculture



HS Scope Examples - Manufacturing/Engineering/Construction



Existing



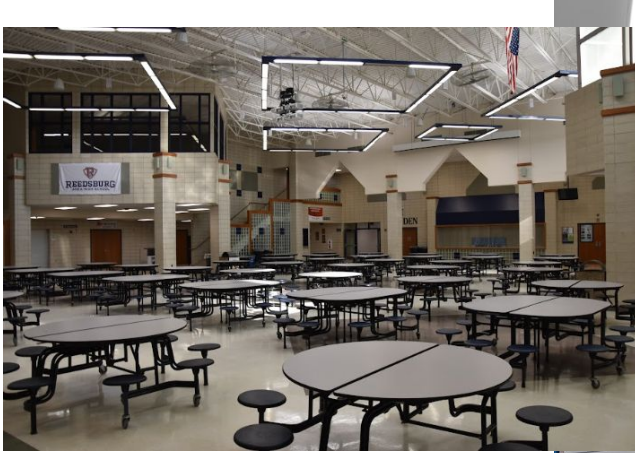
HS Scope Examples - Manufacturing/Engineering/Construction



Existing



HS Scope Examples - Commons/Cafeteria



Existing



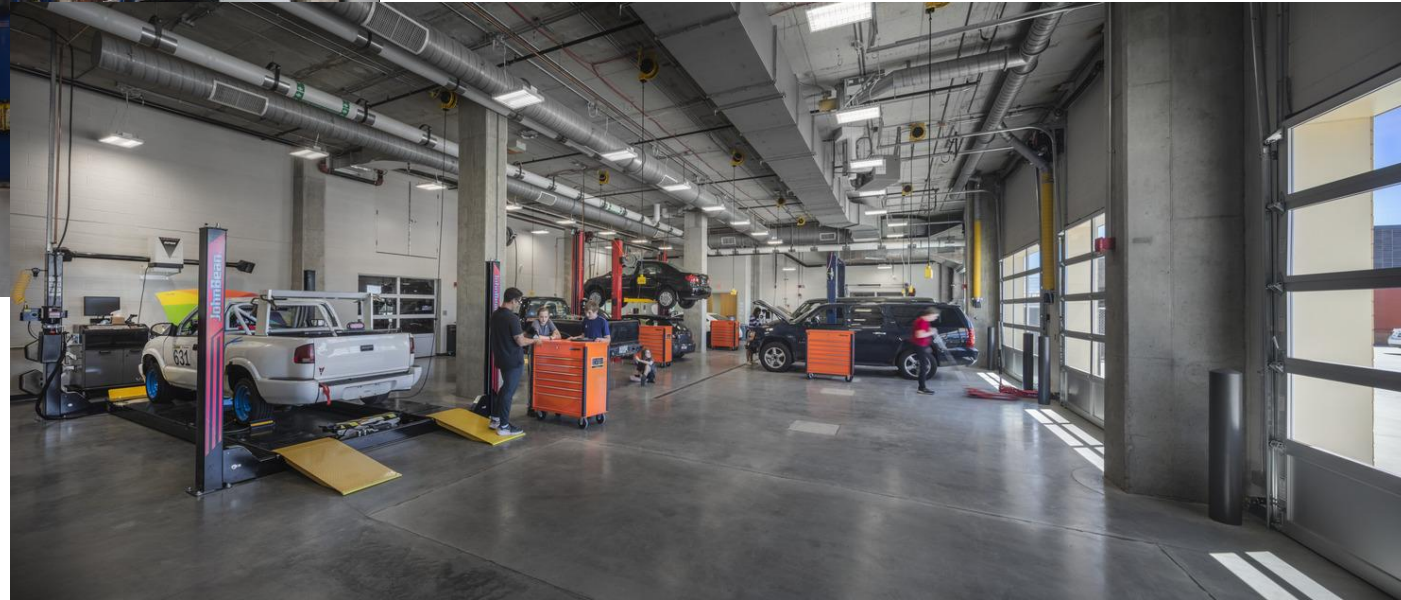
HS Scope Examples - Commons/Cafeteria



HS Scope Examples - Automotive



Existing



Prioritization Tool



REEDSBURG School District

12/6/2023

Option	Cost		IN	OUT
New 5-8 Middle School	\$108,620,000	<input type="checkbox"/> 01		
MS Track/BB/SB	\$1,500,000	<input type="checkbox"/> 02		
MS Geothermal	\$1,920,000	<input type="checkbox"/> 03		
MS Maint. Bld.	\$880,000	<input type="checkbox"/> 04		
Demo Webb	\$1,000,000	<input type="checkbox"/> 05		
HS Library/Innovation Cntr	\$3,500,000	<input type="checkbox"/> 06		
HS Agriculture	\$3,000,000	<input type="checkbox"/> 07		
HS Man/Eng/Cons	\$4,300,000	<input type="checkbox"/> 08		
HS Ed/Health/Bus	\$1,100,000	<input type="checkbox"/> 09		
HS Intersections	\$640,000	<input type="checkbox"/> 010		
HS Commons	\$2,300,000	<input type="checkbox"/> 011		
HS IT/AV/Comm	\$600,000	<input type="checkbox"/> 012		
HS Automotive	\$1,200,000	<input type="checkbox"/> 013		
HS Science/FaCE	\$2,800,000	<input type="checkbox"/> 014		

Accepted Options

\$0

0.00%

Project Budget

\$120,000,000



5 Minute Break

Next Steps in the Process

- Kickoff meeting for community survey development with School Perceptions in December.
- Facilities planning update via community newsletter in Feb., 2024.
- Board workshop in February, 2024 to approve community survey for distribution.
- Community survey distributed in March, 2024 with results in May, 2024.



QUESTIONS?



Success Criteria for Tonight's Workshop - Did We?

- ✓ Review the new middle school "bester" scope and concept budget.
- ✓ Receive administration's RAHS scope prioritization and proposal for the Center for Innovation and Entrepreneurship.
- ✓ Provide feedback and direction on the potential sale of land on the site considered for the new middle school.
- ✓ Provide consensus direction on the scope for a potential project to be tested on the March, 2024 community survey.



Key Takeaways from October 4th Workshop

- The Board reviewed an updated 5-8 scope with a reduction in spaces and the evaluation of the physical education and CTE class spaces needs. After discussion, a reevaluation of the number of core classrooms needed for 5th and 6th grade only was requested, along with a question regarding the type of physical education curriculum needs of outdoor spaces.
- The administration shared their prioritization perspective of the high school scope and the Center for Innovation and Entrepreneurship proposal. The board consensus:
 - Pursue the scope areas related to facility improvement to align and support the curriculum of spaces related to agriculture, manufacturing, engineering, and construction.
 - Pursue an upgrade to the commons area, as this is the epicenter of the high school utilized by students, families, community, and guests through arts, athletics, activities, and education.
 - Supports the administration's efforts to pursue support for the development of the Center for Innovation and Entrepreneurship that can be utilized by and support all student career pathways.



Key Takeaways from October 4th Workshop

- The board provided feedback and direction on the potential sale of land on the site considered for the new middle school.
- The board was diligent in cross-examining and evaluating the district's many educational facility needs as they worked through a prioritization exercise that resulted in a consensus on the scope of a potential project.
- The next steps include the development of a community survey to test the potential project in March 2024. Before the survey, the District will share supporting information with the community in the February 2024 issue of the District newsletter Fearless Pursuits.





SCHOOL DISTRICT OF
REEDSBURG
