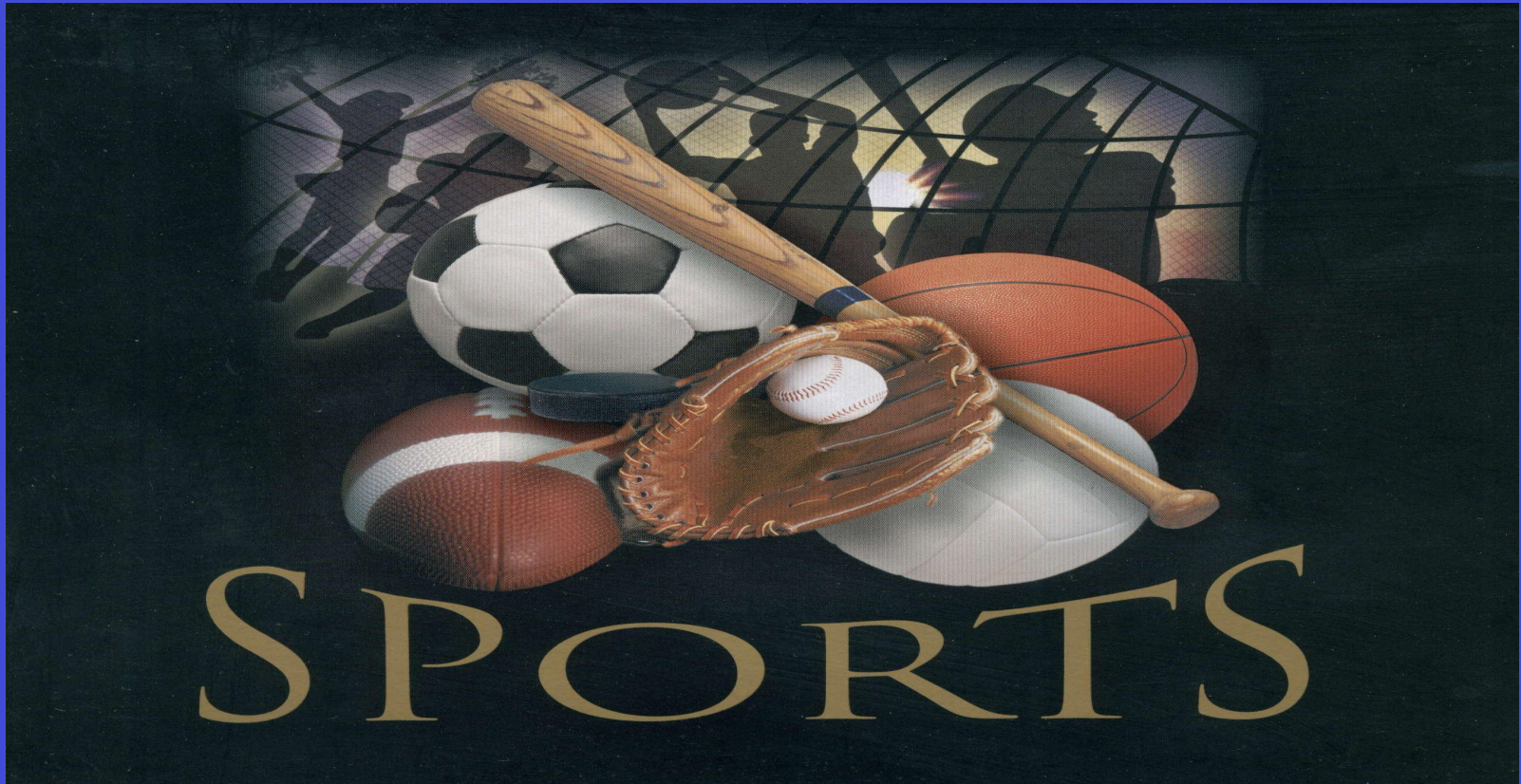


# WIAA Code Presentation



Parents & Student-Athletes

# Responsibilities of Participation in Activities

All students may have the privilege to participate in extra / co-curricular activities if he/she is willing to assume certain **responsibilities**.

**Participants are held to a higher standard.**

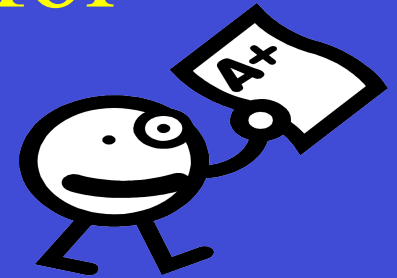
Participants must abide by the Code of Conduct and eligibility requirements of ALL RAHS ACTIVITIES in order to maintain the privilege to participate.

# Extra-Curricular Code of Conduct

# Effective Period

The RAHS Code of Conduct  
is in effect  
**12 months** of the year  
by WIAA RULE.

# Code “A” Requirements for Participation



## Attendance

Students are expected to be in school the entire day of the event unless other arrangements are made through the Principal and/or Activities Director prior to the absence.

**Exceptions:** Professional pre-arranged apt., school trips, funerals, early dismissals, voting or family emergencies

## Grading

Student/athlete eligibility is determined by their quarter grades. Receiving an F or not maintaining a 1.67 GPA will result in either probation or ineligibility for practice and/or contests.

(See Handout)

# Code “B & C” Violations

**Code B Violations** = **Student / Athletes involved with...**

Alcohol, drugs or look-alikes, Criminal acts, attendance at a social gathering, expulsion, harassment, discrimination or inappropriate use of electronic media

**Code C Violations** = **Student / Athletes involved with...**

Any behaviors that are outside of the commonly held expectations of athletes or behaviors not specifically covered in the code, student handbook or WIAA policy, may be classified as Conduct Unbecoming.

**Consequences for Code “B” & “C” violations are outlined on your handout.**

# TRANSPORTATION

## Travel to a Contest

- Players will ride the bus together to all contests.



## Travel After Contest

- Students are encouraged to ride the bus with the team.
- You may transport your own child by completing a [TRAVEL RELEASE FORM](#) and talking to the coach.
- Please ask permission of your coach and present the completed transportation form **AFTER** the contest.

# Other School Policies related to participation

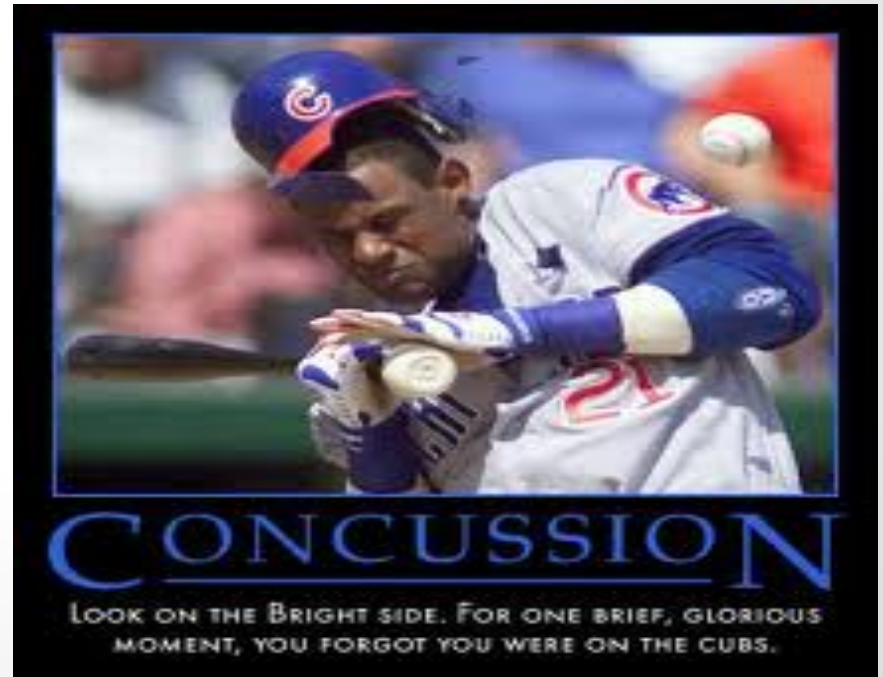
## Use of Equipment and Uniforms

- As the user of school equipment, it is your responsibility to care for it in a reasonable manner and return it in a timely manner upon completion of your sport season.
- Failure to keep good care or return any equipment will result in the cost of the equipment being placed as a student obligation.



# Concussions & Inherent Risk

With participation in any sport, there is always a risk for injury.



# What is a concussion?

(view video on WIAA Website)

[Click Here](#)

# RAHS Concussion Management Plan

- **RAMC TRAINERS Rachel Lopp or Phil Carlin**
- **IMPACT TESTING for athletes**
- **CONCUSSION EDUCATION for coaches**
- **CONCUSSION EDUCATION for parents & athletes (video)**

PARENTS & ATHLETES are required to sign the concussion education agreement and Impact testing form to be eligible for practice.

# How to Get Information

- High School Phone

(608) 768-8928 x. 1104

- RAHS Activities Website

- <http://www.rsd.k12.wi.us/high/>

- WIAA Website

- [www.wiaawi.org](http://www.wiaawi.org)

- Sport Schedules

- [www.badgerconference.org](http://www.badgerconference.org)
- use “Notify Me” feature



# Participation Obligation CHECKLIST

Turn these into RAHS main office.

1. Sign Pledge Form (keep handouts)
2. Sign Concussion Agreement Form (keep handouts)
3. Impact Testing Consent Form
4. Fill out Emergency Medical Treatment Form
5. Turn in physical or alternate year card
6. Pay participation fee of \$50 per sport (\$200 cap per family)

**ALL OBLIGATIONS MUST BE TURNED IN  
BEFORE THE ATHLETE CAN PRACTICE!**

# ***THANK YOU FOR VIEWING***

***As parents, student-athletes and coaches, we are all in this together.***

***We need to work hard, remain positive and support the efforts of everyone involved.***

***HAVE A GREAT SEASON !!!!!***